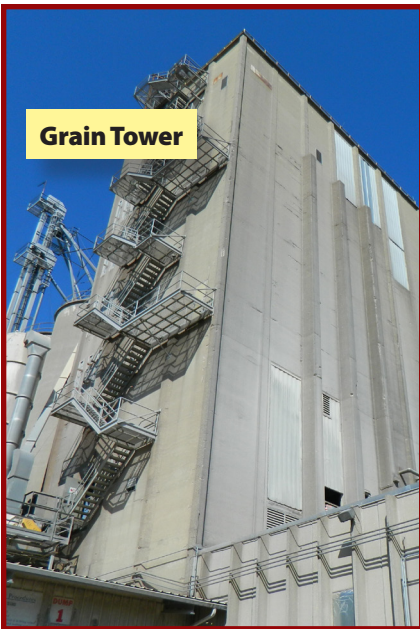
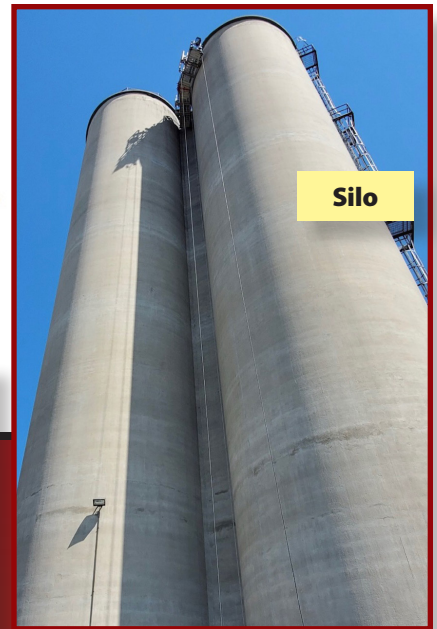


TRS

TOTAL RESTORATION SERVICES, INC.



Grain Tower



Silo



Industrial Process Ceiling



Industrial Slabs



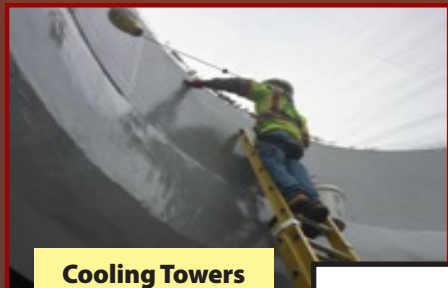
Containment Tanks



Brick Wall Failure



Beam/Column Repairs



Cooling Towers



Excavation



Heavy Slab
New
Foundation
SS Trench
Drains

Trench Drains



Failure



Industrial Storage Roofs

MAIN OFFICE
1005 S. Main Street, Suite A
Hampstead, Maryland, 21074
Bus : 443-507-5096
Fax: 443-507-5095

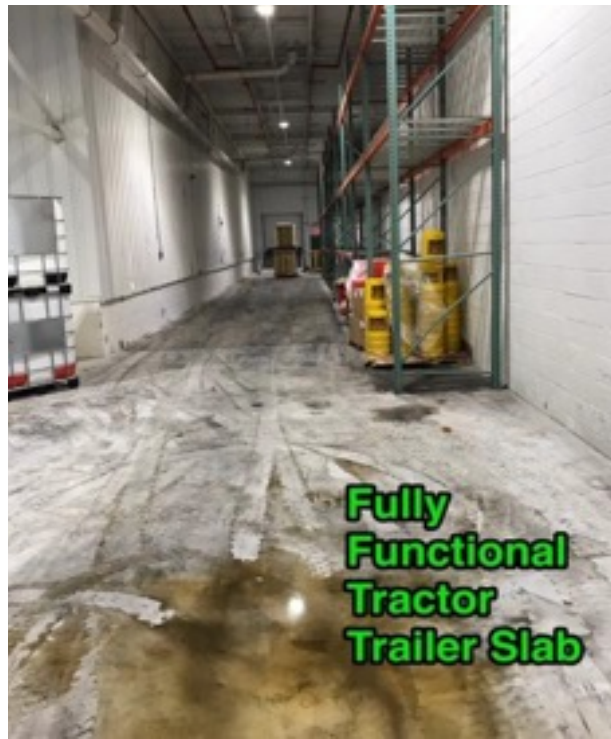
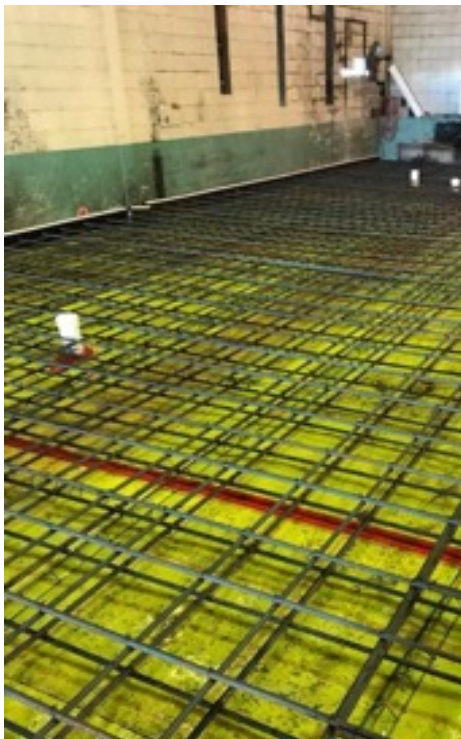
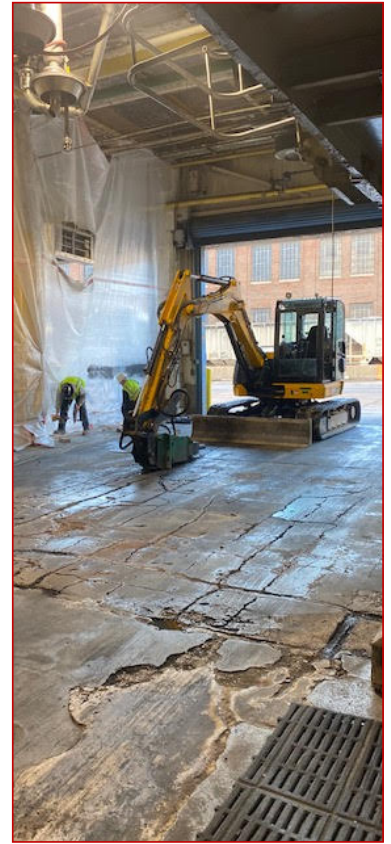
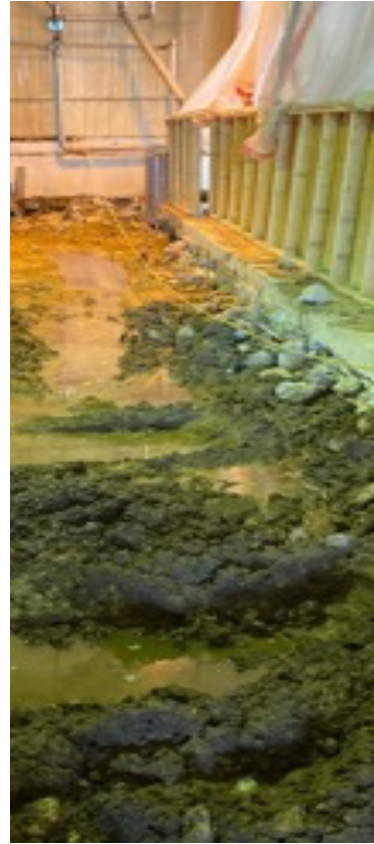
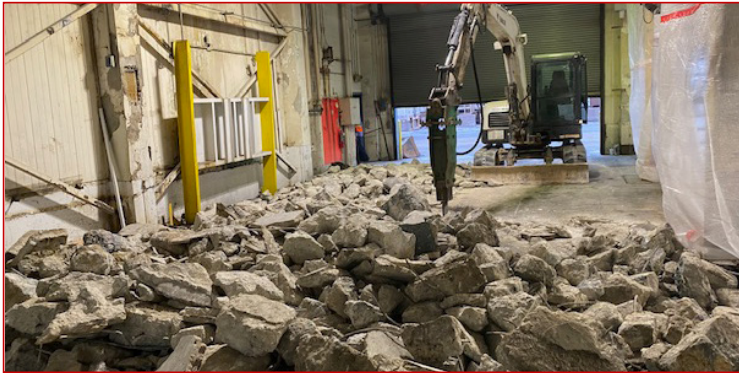
EASTERN SHORE OFFICE
Bishopville, Maryland 21813
Bus : 877-5-RESTOR (573-7867)

www.TotalRestorationServices.net

* Photos are Property of TRS

CASE STUDY: HEAVY DUTY STRUCTURAL INDUSTRIAL FLOOR SLABS

The majority of Total Restoration's industrial clients utilize rail and truck transport for the supply of process materials and the transport of plant product. The cumulative effect of repeated traffic loads to rail and truck foundation systems will deteriorate the track and slab substructure over time



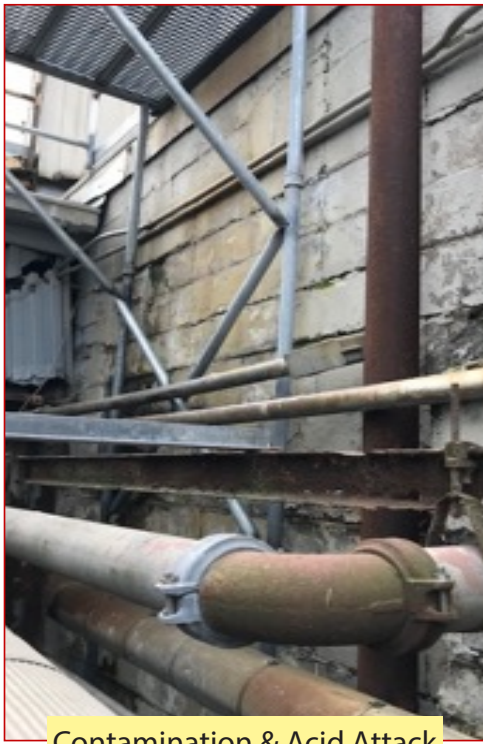
In this case review, the primary mode of slab distress and deterioration was "traffic-induced" loading on the subgrade where hydraulic pumping of the sub-base soils eroded the supporting soils.



CASE STUDY:

UTILITY WALL DETERIORATION HEAT/CHEMICAL/LEACHING EXPOSURE

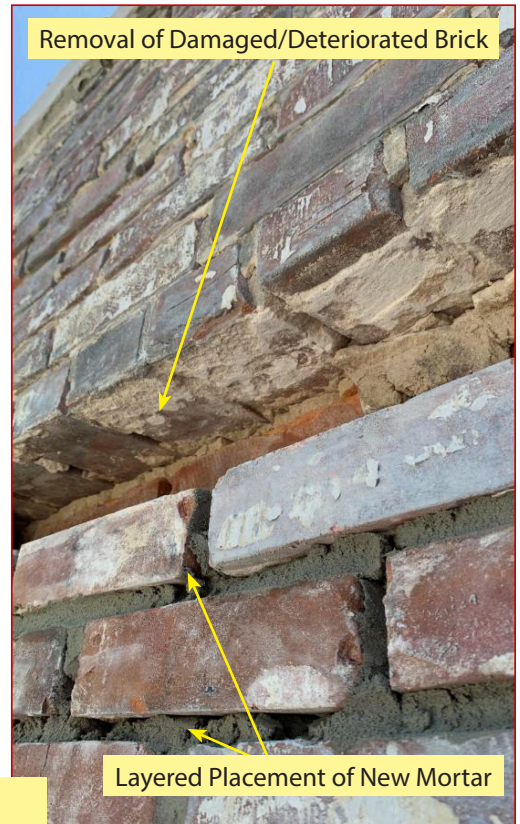
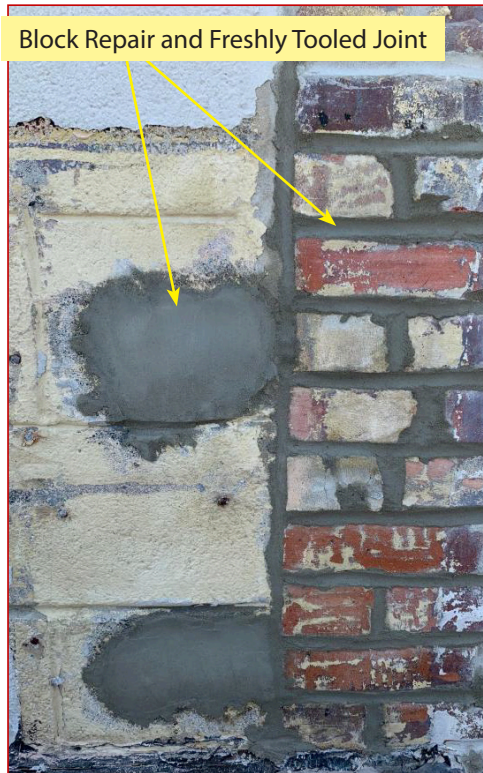
The characteristic of wear and tear that masonry block walls are subjected to, necessitates their periodic repair. Where possible, accepted industry practices need to be followed to prevent the block from cracking, spalling and loss of strength due to moisture intrusion, freeze/thaw damage, and the leaching of cement binder in the block matrix.



CASE STUDY: EXTREME MASONRY WALL DETERIORATION

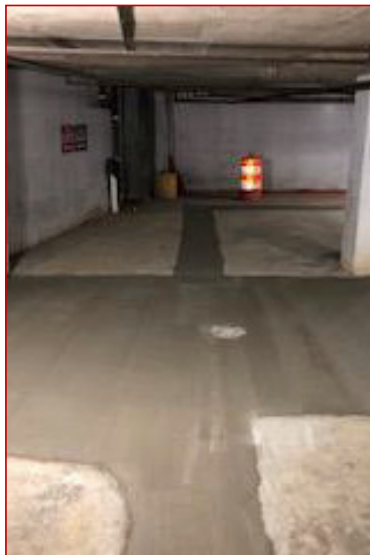
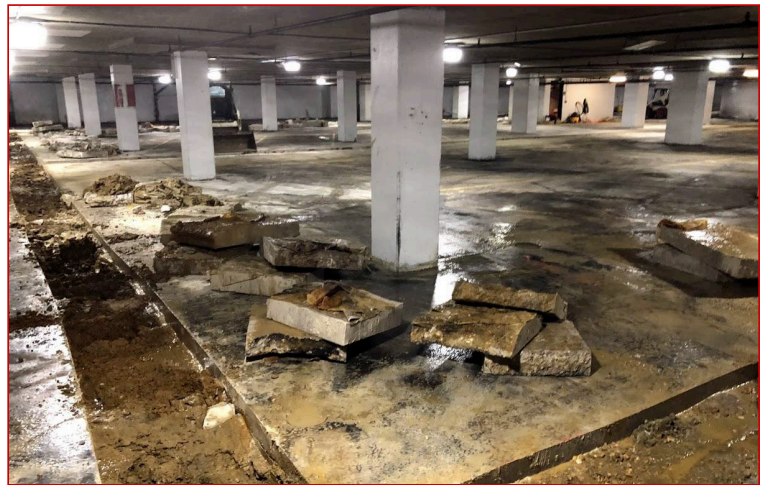
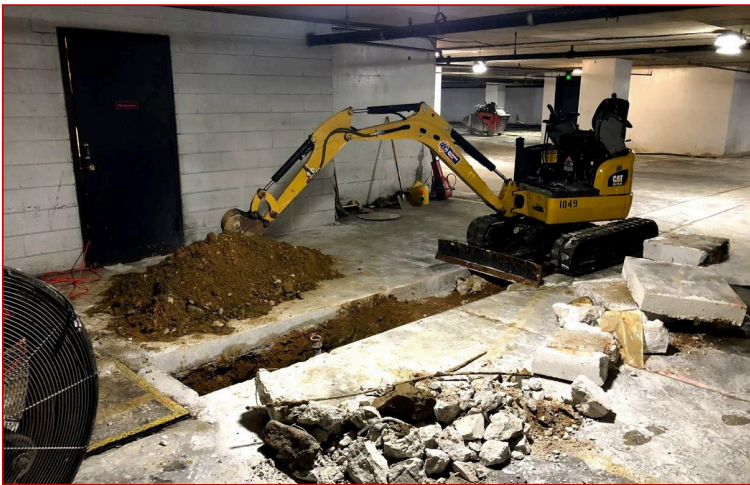
Extreme masonry deterioration is, whether in small or large areas can be a serious structural issue. In-situ repairs are required in many cases, consisting of mortar grouting, unit block replacement, dry packing, shoring reinforcement addition and parapet cap replacement. Occupied buildings promote different internal and external ambient pressures and temperatures, which over time contribute to the facades demise.

Severe Mortar Joint deterioration



CASE STUDY: FLOOD CONTROL AND DRAINAGE

Buildings located at subterranean levels are exposed to alternating hydraulic ground water pressures. Understanding the dynamics of groundwater flow is a daunting task. Groundwater and storm water management are effective tools to improve and control water infiltration issues.



Industrial Facilities require a wide range of structural maintenance services.

TRS utilizes products and processes to structurally restore, reinforce and protect concrete and masonry.



PC Tee Stem Repair

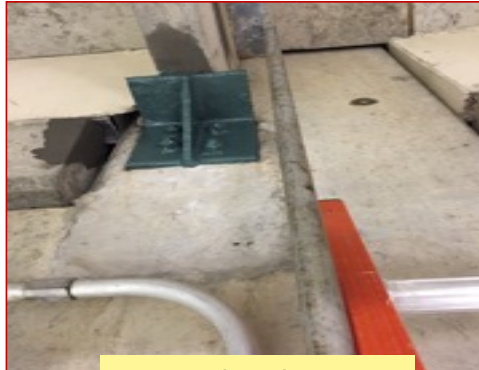


Strengthening Column/Beams

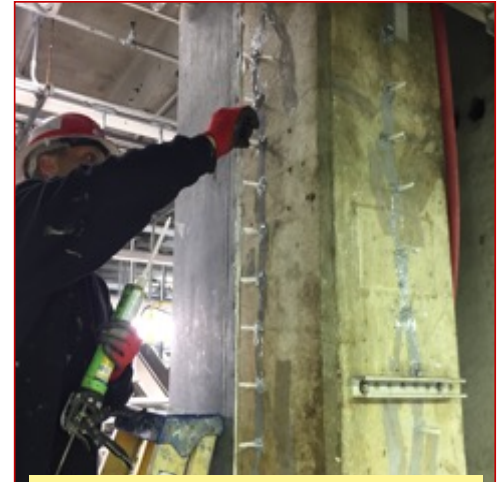
- Concrete Restoration
- Primary Secondary Coating
- Pre-stress Reinforcement
- Post Tensioned Structures
- Moisture Control
- Force Protection and Hardening
- Carbon Fiber
- Sulfate Resistance Materials
- Masonry Restoration
- Chemical Grouting
- Expansion Joints
- Building Facades
- Steel Assemblies
- Underpinning
- Positive and Negative WP
- Carbon Fiber Wrap
- Refractory Liners
- Bearing Plate Grouting



Hollow Core Plank Repair



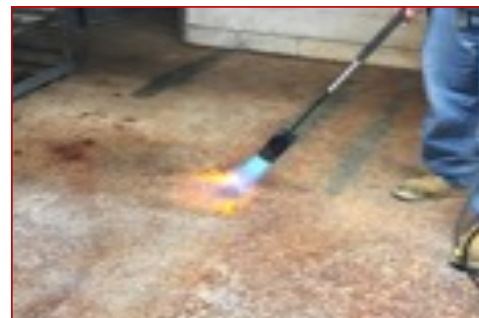
Structural Steel Supports



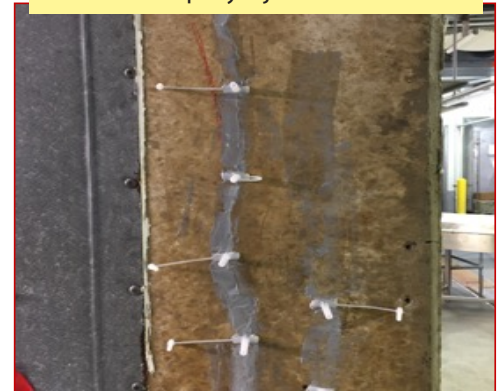
Epoxy Injection



Dike Repair and Liners



Vector Control and Grouting



SCAN FOR
MORE INFO



MAIN OFFICE
1005 S. Main Street, Suite A
Hampstead, Maryland, 21074
Bus : 443-507-5096
Fax: 443-507-5095



**EASTERN SHORE OFFICE
AND WAREHOUSE**
Bishopville, Maryland 21813
Bus : 877-5-RESTOR (573-7867)

John Kahline

Owner, Administration

(443) 277-0969 • Johnkahline@hotmail.com

Joe Brocato

Owner, Production

(410) 365-1043 • Joebtrs@hotmail.com

Troy Myrick

Production & Sales

(410) 404-9245 • TroyMTRS@outlook.com

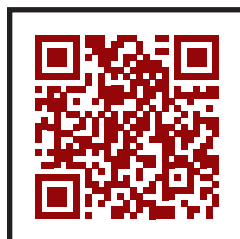
Stephen A. Johanson, P.E.

Industrial Sales

TotalRestoration1951@gmail.com



TOTAL RESTORATION SERVICES, INC is a member of ISN's Health, Safety, Environmental and Quality (HSEQ) Review and Verification Services (RAVS) Team, which facilitates the collection of relevant documents during the contractor pre-qualification process to assist in evaluating workplace and environmental safety compliance. Once these documents are collected in ISNetwork, ISN engages an experienced team to review and monitor HSEQ subject-matter in accordance with Client and/or industry standards.



www.TotalRestorationServices.net