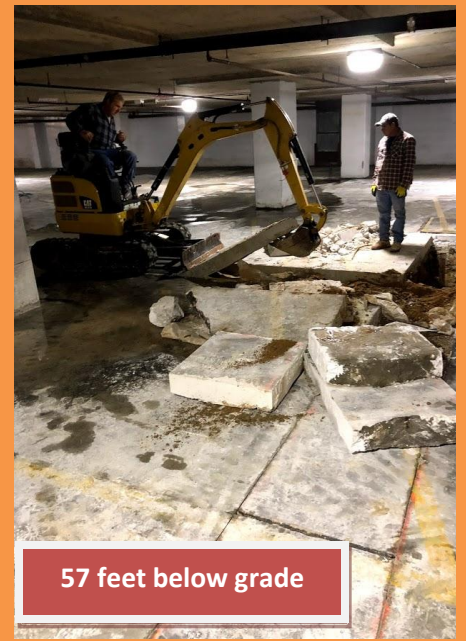


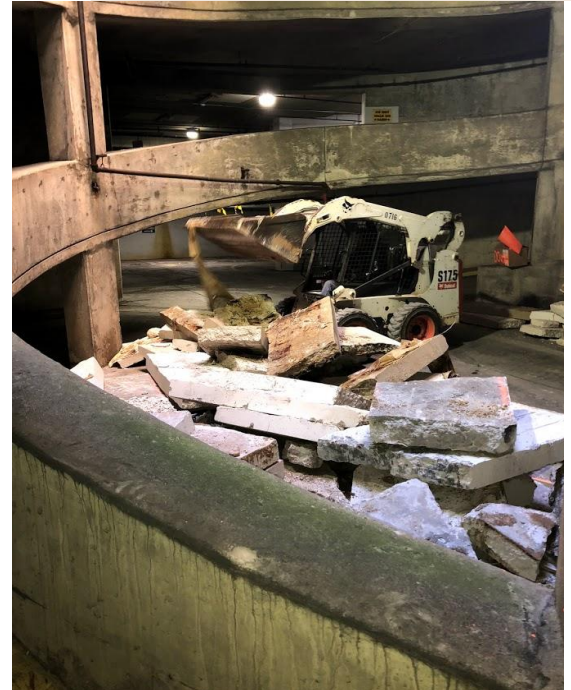
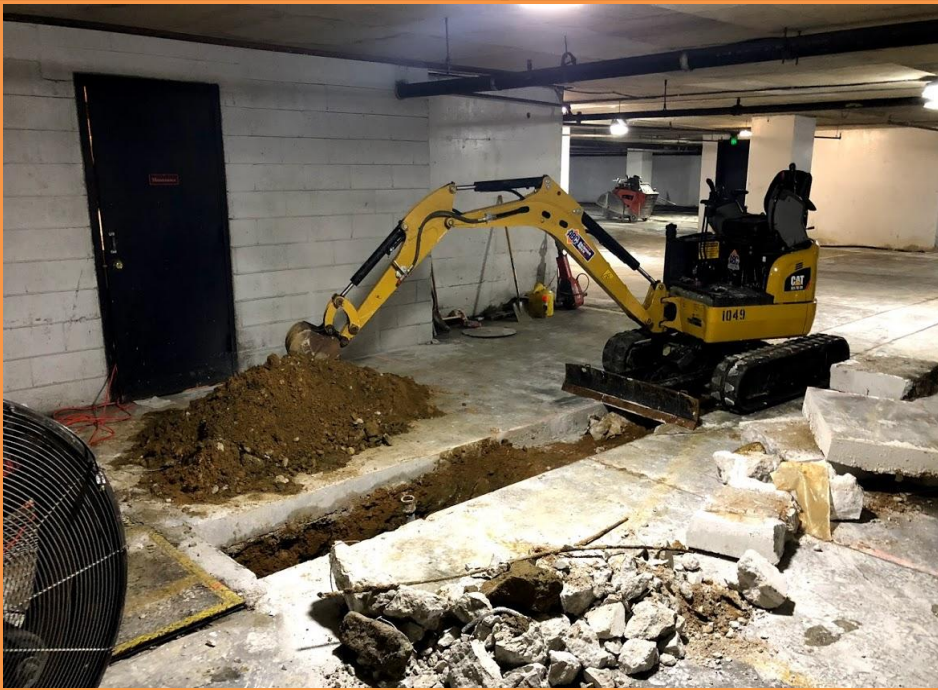
Refurbished Below Grade Drainage Systems



Double Spiral Ramp Access



57 feet below grade



Level P-1

Located

57'

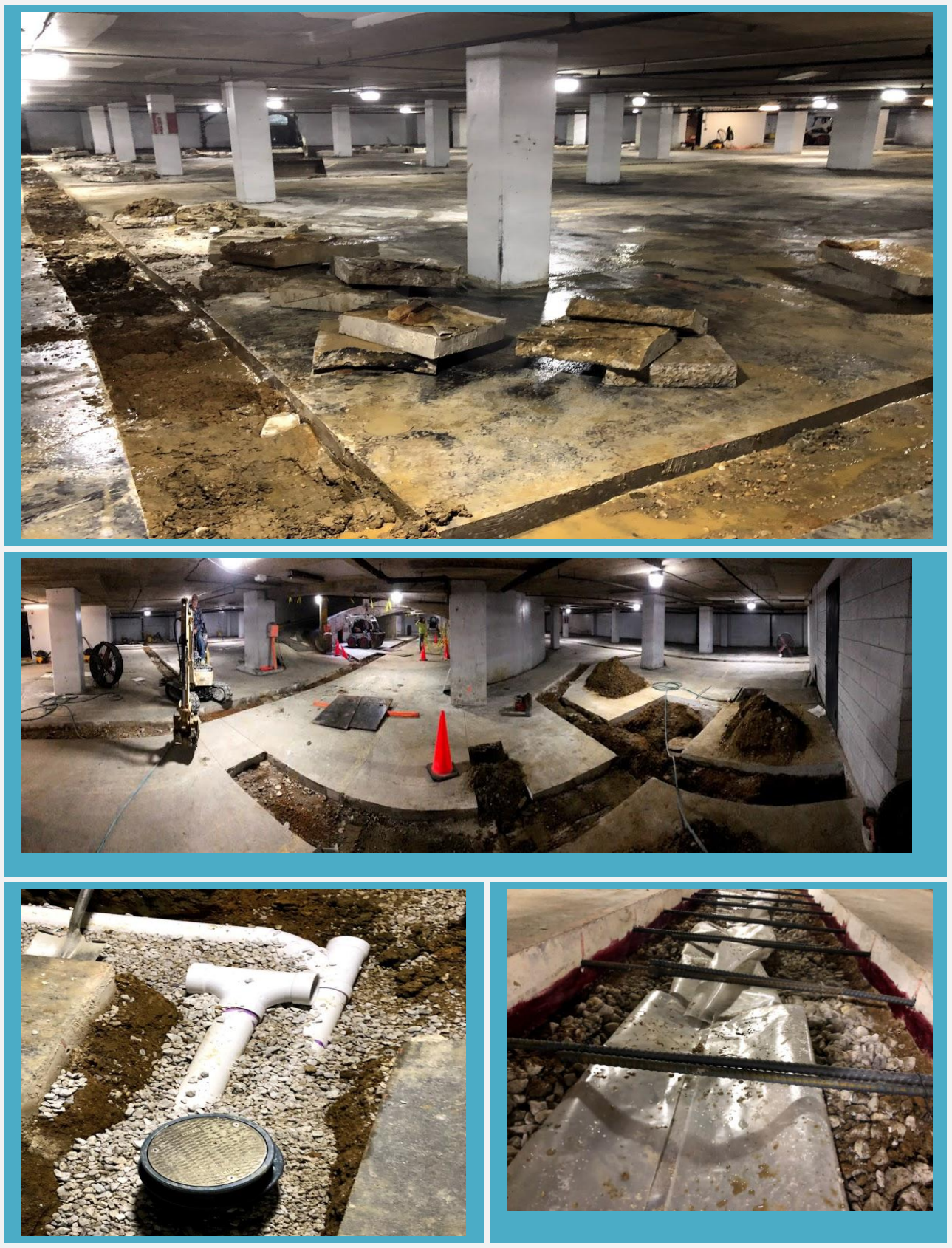
Below Grade

Saw-cutting... 2,680 lf
 Slab Demolition... 7,360 sf
 Concrete Debris...4,600 cf (170 CY)
 Soil Excavated...5,360 cf (200 CY)
 CR6 ... 224 tons
 Concrete... 46 CY

PVC Pipe...1,370 lf
 Steel Pipe...18 lf
 Cleanouts...18 ea
 Area Drains 15" x 15"... 14 ea
 Water stop...2,680 lf
 Dowels # 4 bar...2,680 each

All materials transported via multiple bobcat, with traffic control in an active parking garage. Traffic Signage and Flagmen provided

Refurbished Below Grade Drainage Systems



Refurbished Below Grade Drainage Systems

Additional Drainage Fingers to address Ground water surcharges'



Containment Curb's



Broom Finish



Total Project Finished in 5 Weeks